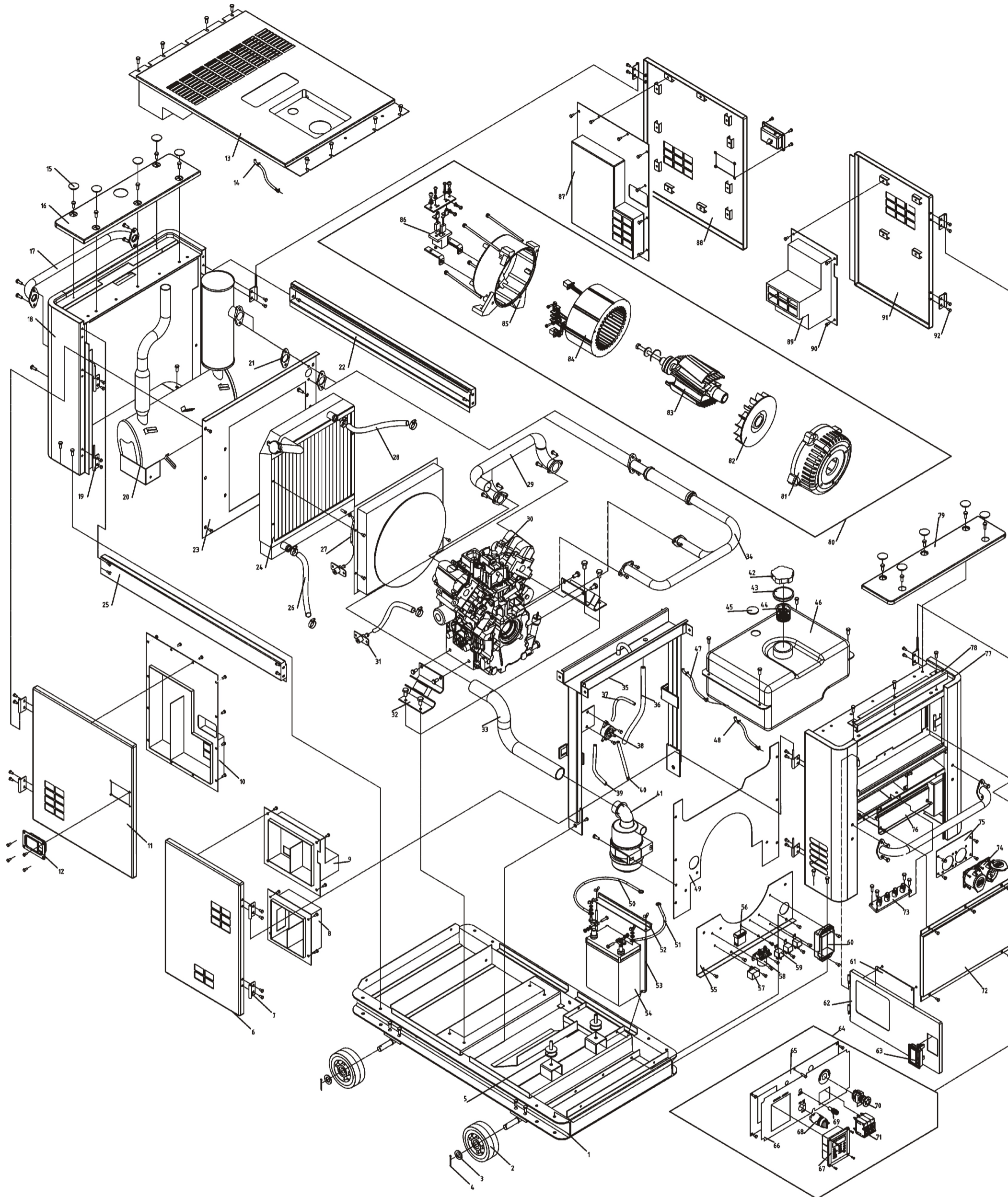


ASSEMBLY AND PARTS ALBUM

KDE 12STA



No.	Part.No	Description	Qty.	No.	Part.No	Description	Qty.	No.	Part.No	Description	Qty.	No.	Part.No	Description	Qty.
1	KDE 12ST-03100	Chassis weldment	1	24	KDE 12ST3-10200	Radiator assembly	1	47	KDE 12ST-14001	Outlet pipe of the fuel tank	1	70	Lay37-1125	Quick-stop button	1
2	KDE 12ST-03310	Cartwheel	4	25	KDE 12ST-08002	Left decorating plate of the top cover	1	48	KDE 12ST-14003	Return pipe of the fuel tank	1	71	DZ47-63/3 C25	Breaker	1
3	GB/T97.1-2002	Flat washer 20	4	26	KDE 12ST-11001	Outlet pipe of the water tank	1	49	KDE 12ST-04010	Clapboard of the front upright column	1	72	KDE 12ST-04001	Front cover board	1
4	GB/T91-2000	Cotter pin 3	4	27	KDE 12ST-11003	Drain pipe of the water tank	1	50	KDE 12STA-13210	The positive pole connection of the battery	1	73	KDE 12STA-13300	Output board	1
5	KDE 12ST-12100	Damping washer of the generator	2	28	KDE 12ST-11002	Inlet pipe of the water tank	1	51	KDE 12STA-13210	The negative pole connection of the battery	1	74	16A 250V	E receptacle	2
6	KDE 12ST-07400	Door board (4) assembly	1	29	KDE 12ST-01100	Exhaust pipe assembly	1	52	KDE 12ST-03002	Pressure plate of the battery	1	75	KDE 12ST-04310	Installation of the E receptacle	1
7	KDE 12ST-07400	Hinge(1)	8	30	KM2V80	Power assembly	1	53	KDE 12ST-03003	Dowel of the pressure plate	2	76	KDE 12ST-04002	Cover board of the junction box	1
8	KDE 12ST-7900	Door board (4) Air hole	1	31	KDE 12ST-11004	Oil exhaust pipe	1	54	50AH-12V	Battery	1	77	KDE 12ST-04002	Front upright column welding	1
9	KDE 12ST-07800	Door board (4) Air hole	1	32	KDE 12ST-12200	Damping washer of the engine	2	55	KDE 12ST-13600	Relay board welding	1	78	KDE 12ST-04010	Decorating plate welding	1
10	KDE 12ST-07300	Air hole weldment	1	33	KDE 12ST-01001	Air outlet pipe of the air cleaner	1	56	BX2041C	Fuse block	1	79	KDE 12ST-04210	Cover board welding of the front upright column	1
11	KDE 12ST-07100	Door board (1) assembly	1	34	KDE 12ST-11200	Exhaust pipe assembly	1	57	KDE 16T3-13604	55AH charging adjuster	1	80	KDE 12ST3-02000	Starter assembly	1
12	KDE 12ST-07110	Door lock assembly	2	35	KDE 12ST-05000	Middle upright column assembly	1	58	QDC-100A12VDC	Preheat relay	1	81	8JF-002-023	Back cover	1
13	KDE 12ST-08100	Top cover welding	1	36	KDE 12ST-05001	Middle upright column water pipe	1	59	HFV4 012-1Z6	Relay	3	82	8JF-027-010	Fan	1
14	KDE 12ST-07101	Water pipe of the top cover	1	37	KDE 12ST-14004	Exhaust pipe of the vacuum-pipe	1	60	SMART-CTRL 1P	Smart panel controller	1	83	5JF-002-208	Rotor	1
15	KDE 12ST-04001	Waterproof cover	10	38	KG 1000Ti-07100	Vacuum pump	1	61	KDE 12ST-04005	Polymethyl methacrylate	1	84	5JF-003-064	Stator	1
16	KDE 12ST-06200	Cover weldment of the back boarding	1	39	KDE 12ST-14005	Return pipe of the vacuum pump	1	62	KDE 12ST-04300	Instrument door welding	1	85	8JF-002-023	Front cover	1
17	KDE 12ST-04020	Handle welding	2	40	KDE 12ST-14002	Delivery pipe of the vacuum pump	1	63	KDE 12ST-08500	Door lock	1	86	KDE 12ST3-02102	Carbon brush	2
18	KDE 12ST-07060	Back boarding welding	1	41	KM376-100	Air cleaner	1	64	KDE 12ST-13100E	Instrument assembly	1	87	KDE 12ST-07400	Air hole weldment	1
19	KDE 12ST-07050	Hinge	8	42	KDE 17T3-14200	Fuel tank cover	1	65	KDE 12ST-13110E	Control pane	1	88	KDE 12ST-07500	Door board (2) assembly	1
20	KDE 12ST-11200	Muffler weldment	1	43	KM168F-10003	Seal ring	1	66	KDE 12ST-13120E	PVC label	1	89	KDE 12ST-07100	Air hole weldment	1
21	KDE 12ST-11001	Exhaust pipe gasket	2	44	KM168F-10004	Filter screen	1	67	KGTR-12V	Smart display screen	1	90	GB/T6170-2000	Bolt M6	42
22	KDE 12ST-08001	Right decorating plate of the top cover	1	45	KDE 12ST-14001	Photoscope	1	68	JK427	Electric door lock	1	91	KDE 12ST-07600	Door board (3) assembly	1
23	KDE 12ST-10101	Baffle welding	1	46	KDE 12ST-14000	Fuel tank assembly	1	69	BLX16×30	Fuse	1	92	GB/T5788-2000	Bolt M8×16	76

WUXI KIPOR POWER CO., LTD.

Beside Jingyi Rd, Third-stage Development Section of Wangzhuang Industry Area, Wuxi High & New Technology Industry Development Zone. TEL: 0086-510-85200888 FAX: 0086-510-85200999